



CATALOG 2024

# HYDRAULIC BLOCKS

CETOP3 (NG6) to CETOP 8 (NG25)



**ACTIONHYDRO**  
HYDRAULIC PUMPS, MOTORS AND COMPONENTS



**ACTIONHYDRO**<sup>™</sup>  
HYDRAULIC PUMPS, MOTORS AND COMPONENTS

**Action-Hydro BV**

Artemisweg 105 H

8239 DD Lelystad

The Netherlands

[info@action-hydro.nl](mailto:info@action-hydro.nl)

[www.action-hydro.nl](http://www.action-hydro.nl)

Tel. +31 (0)36 53 60 204



### **First European manifolds' manufacturer**

MECABOR manifolds have a well-established reputation for quality within the hydraulic industry, with production dating back to the 1970s. As of 2022, Action Hydro B.V. holds the exclusive rights for manufacturing MECABOR manifolds. Our production capabilities hold a range of standard products as well as customized manifolds tailored to individual customer requirements. Additionally, we maintain stock of the most used components in both cast iron (GGG) and aluminium materials.

### **Design Expertise**

At Action Hydro B.V., we specialize in hydraulic manifolds and are here to assist you. If you require a solution that isn't covered by our standard offerings, please get in touch with your specific requirements, and we'll design a custom hydraulic manifold for your needs.

### **Application areas**

Our manifold can be found in the following fields:

**Industrial Applications:** Such as presses, machine-tools, the steel industry, wind power, and many more.

**Mobile Equipment:** Including agricultural machinery, lifting and hoisting equipment, public works vehicles, mining machinery, and many more.



# MANIFOLD BLOCKS AND SUBPLATES

CETOP 3 / NG6		
Side ports manifold	MR3	6
Side ports manifold + pressure test points on A and B	MR3-PAB	7
Side ports manifold + C10-2 cavity	MR3/C10-2	8
Bottom ports manifold	MRK3	9
Bottom ports manifold + pressure test points on A and B	MRK3-PAB	10
Side ports subplate	MRSL3	11
Bottom ports subplate	MRSK3	12
Blanking plate	MRF3	13
Crossover plate P-A or P-B	MRC3	14
Sandwich plate for pressure test points	MRP3	15

CETOP 5 / NG10		
Side ports manifold	MR5	16
Side ports manifold + pressure test points on A and B	MR5-PAB	17
Side ports manifold + C10-2 cavity	MR5/C10-2	18
Bottom ports manifold	MRK5	19
Bottom ports manifold + pressure test points on A and B	MRK5-PAB	20
Bottom ports subplate	MRSK5	21
Blanking plate	MRF5	22
Crossover plate P-A or P-B	MRC5	23
Sandwich plate for pressure test points	MRP5	24
Adaptor plate Cetop 3 to Cetop 5, A-B and B-A	MRA-5/3	25
Direct adaptor plate Cetop 3 to Cetop 5, A-A and B-B	MRAD-5/3	26

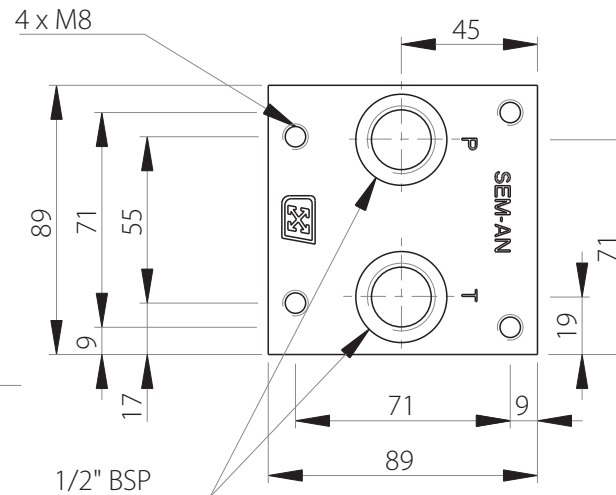
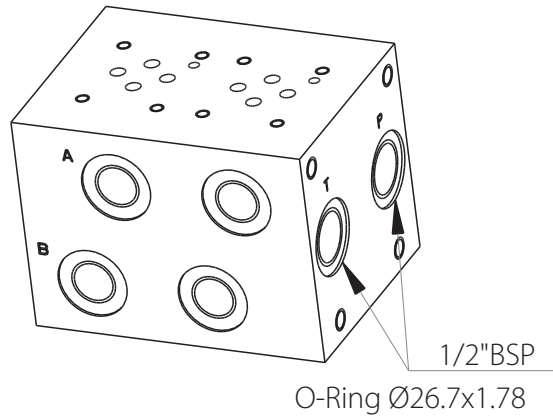
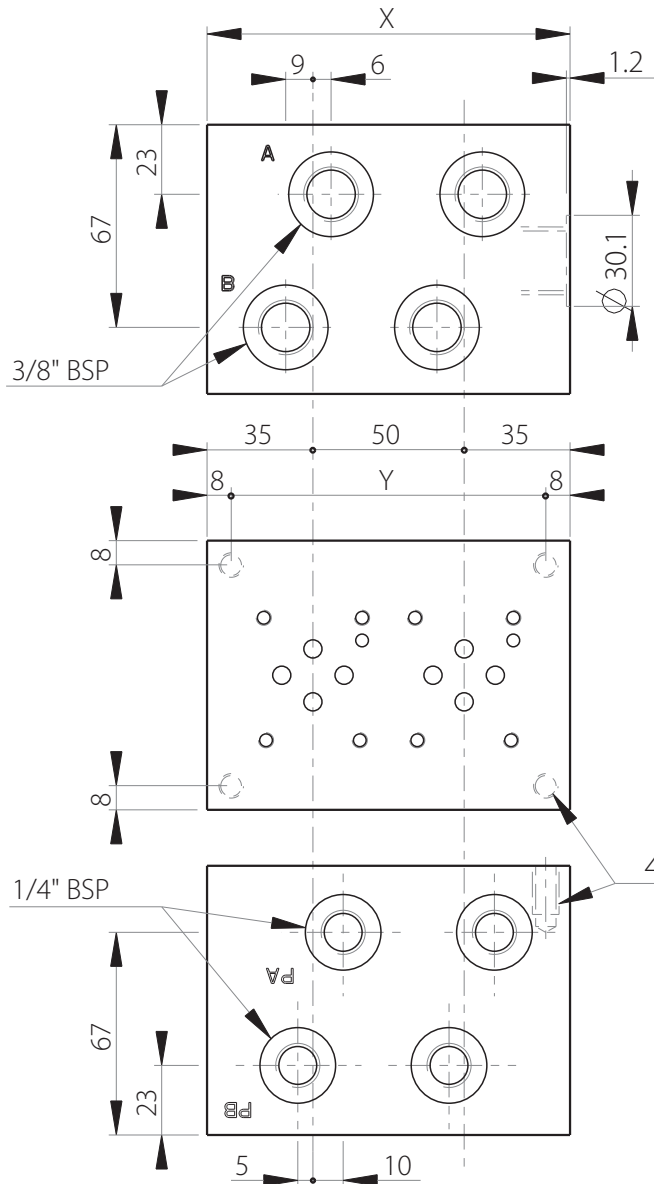
CETOP 7 / NG16		
Side ports manifold with 3/4" ports	MR7- 3/4"	27
Side ports manifold with 1" ports	MR7- 1"	28
Blanking plate	MRF7	29
Adaptor plate Cetop 3 to Cetop 7	MRA-7/3	30
Adaptor plate Cetop 5 to Cetop 7	MRA-7/5	31

CETOP 8 / NG25		
Side ports manifold with 1" ports	MR8-1"	32
Blanking plate	MRF8	33
Adaptor plate Cetop 5 to Cetop 8	MRA-8/5	34
Adaptor plate Cetop 7 to Cetop 8	MRA-8/7	35

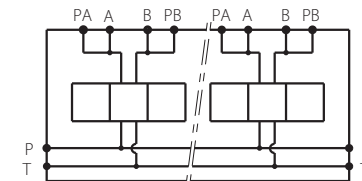


# MR3-PAB

Side ports manifold  
+ pressure test points on A and B  
CETOP 3 / NG6



Stations	X	Y	(kg)
1	70	54	3.50
2	120	104	6.00
3	170	154	8.50
4	220	204	11.00
5	270	254	13.50
6	320	304	16.00
7	370	354	18.50
8	420	404	21.00



## Technical specifications

Material	Zinc-nickel electroplating
Pressure	300 bar max
Flow rate	50 L/min max

Designation code :

MR - 3 - \* . G . P . AB

MECABOR

CETOP 3  
side ports

Station number

Pressure test points  
on A and B

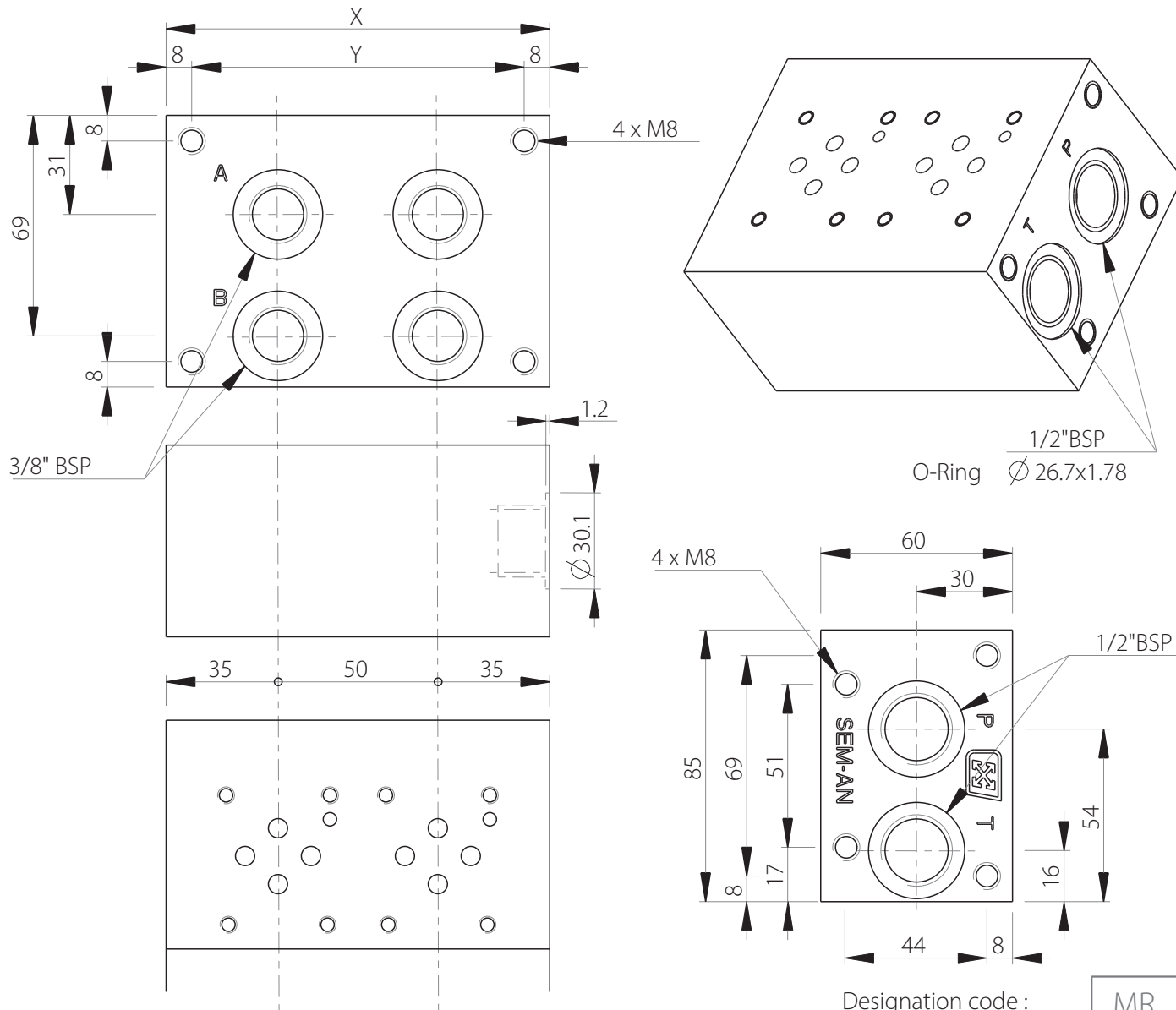
G : ports BSP



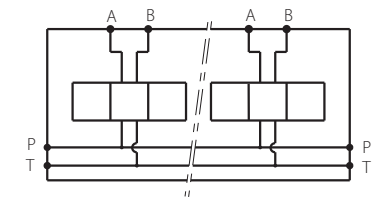


# MRK3

Bottom ports manifold  
CETOP 3 / NG6



Stations	X	Y	(kg)
1	70	54	2.35
2	120	104	3.90
3	170	154	5.45
4	220	204	7.00
5	270	254	8.55
6	320	304	10.10
7	370	354	11.65
8	420	404	13.20



Technical specifications	
Material	Zinc-nickel electroplating
Pressure	300 bar max
Flow rate	50 L/min max

Designation code :

MR . K - 3 - \* . G

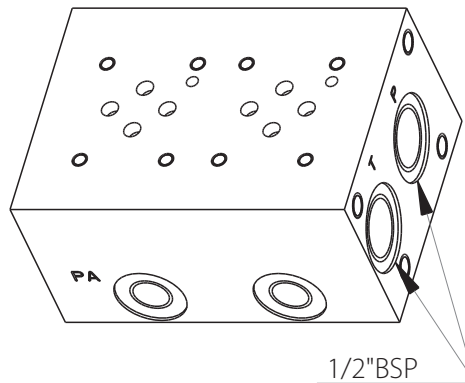
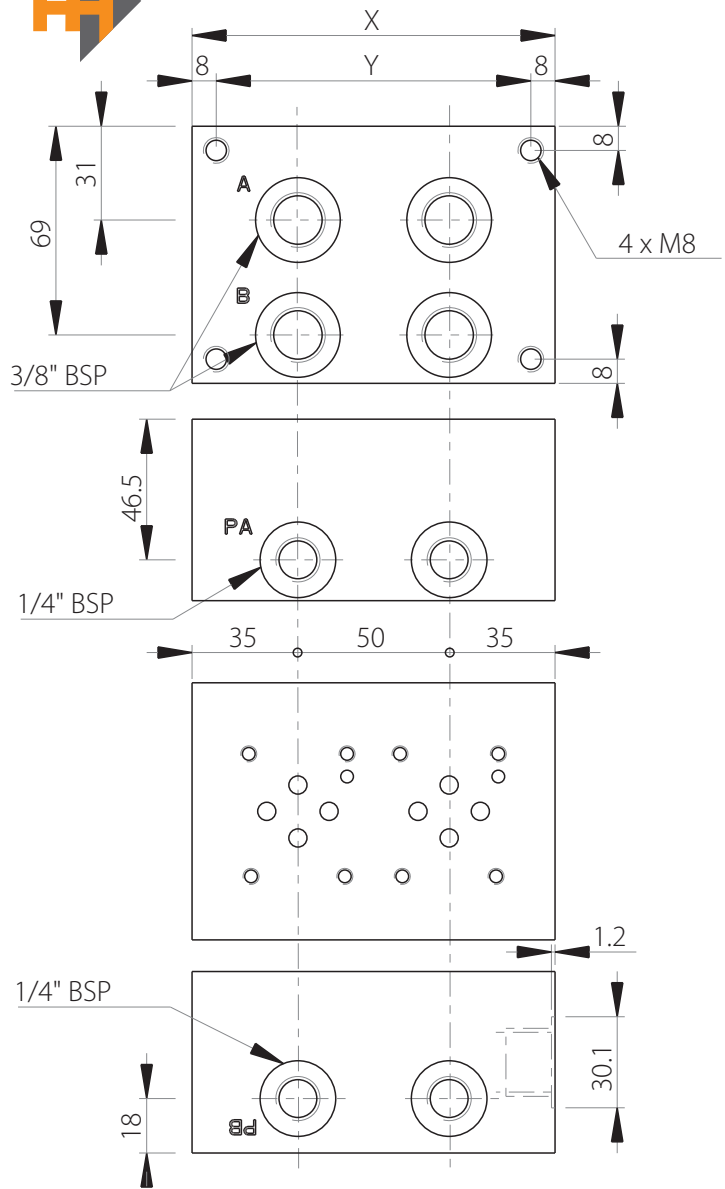
MECABOR

Bottom ports

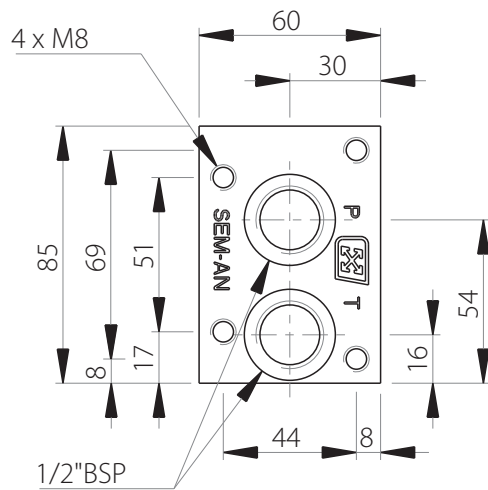
CETOP 3

G : ports BSP

Station number



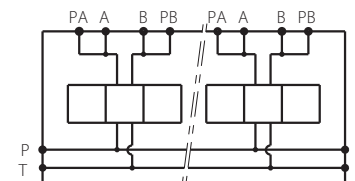
O-Ring  $\frac{1}{2}$ "BSP  $\varnothing 26.7 \times 1.78$



# MRK3-PAB

Bottom ports manifold  
+ pressure test points on A and B  
CETOP 3 / NG6

Stations	X	Y	(kg)
1	70	54	2.35
2	120	104	3.90
3	170	154	5.45
4	220	204	7.00
5	270	254	8.55
6	320	304	10.10
7	370	354	11.65
8	420	404	13.20



## Technical specifications

Material	Zinc-nickel electroplating
Pressure	300 bar max
Flow rate	50 L/min max

Designation code :

MR . K - 3 - \* . G . P . AB

MECABOR

Bottom ports

CETOP 3

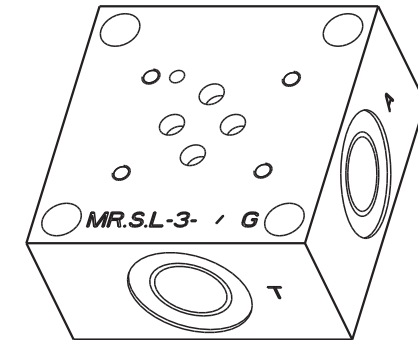
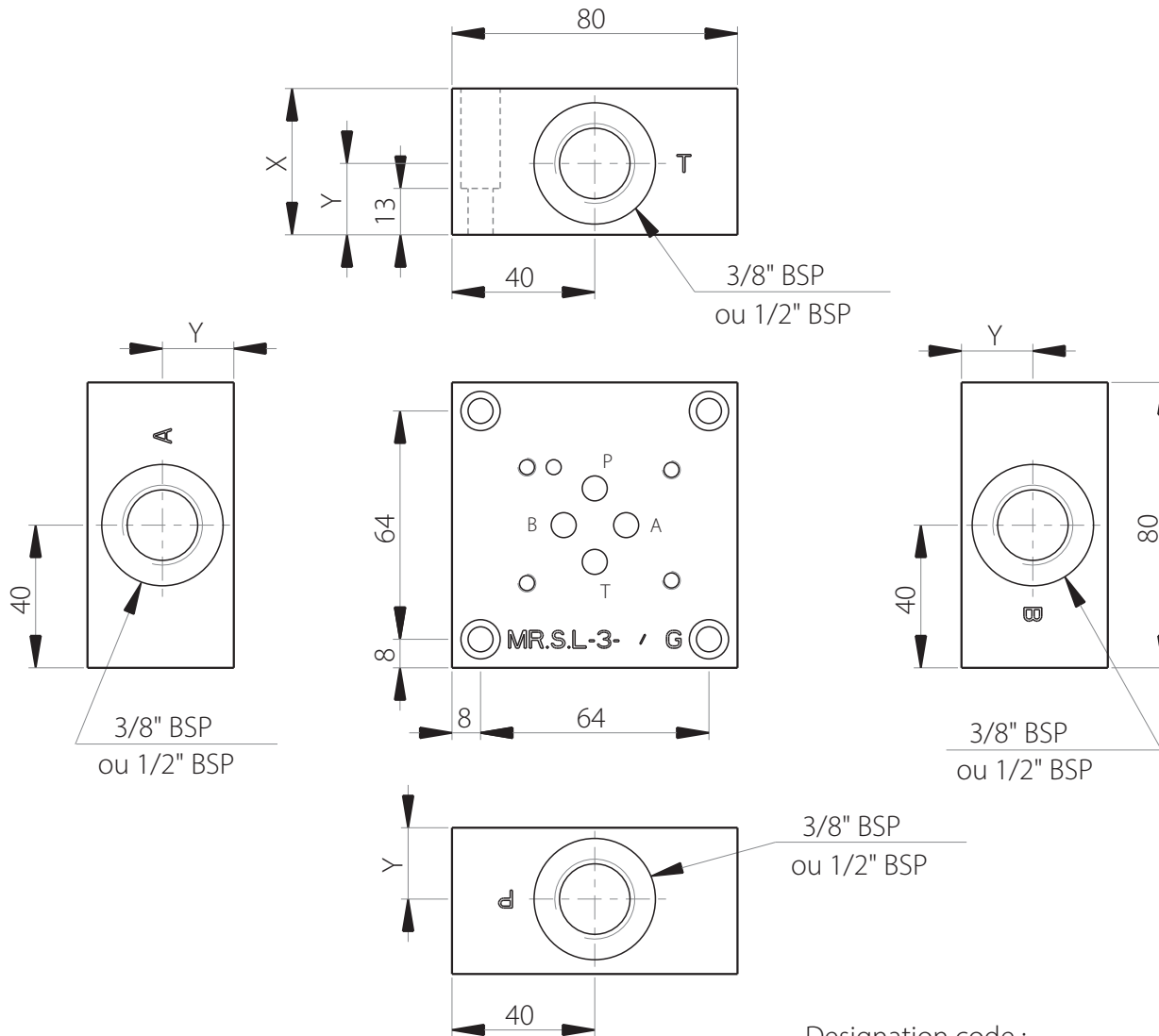
Station number

Pressure test points  
on A and B

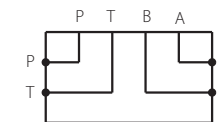
G : ports BSP

# MRSL3

Side ports subplate  
CETOP 3 / NG6

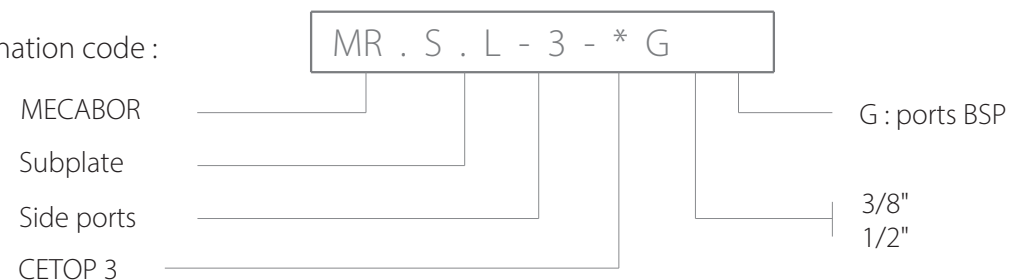


Ports	X	Y	(kg)
3/8"	35	17	1.40
1/2"	41	20	1.56



Technical specifications	
Material	Zinc-nickel electroplating
Pressure	350 bar max
Flow rate	60 L/min max (3/8" BSP) 80 L/min max (1/2" BSP)

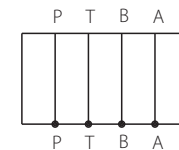
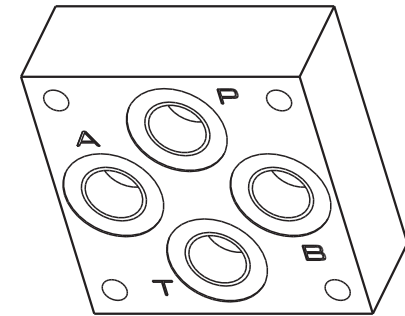
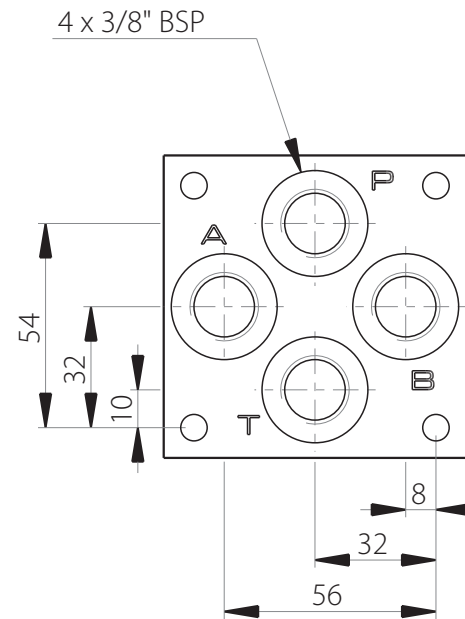
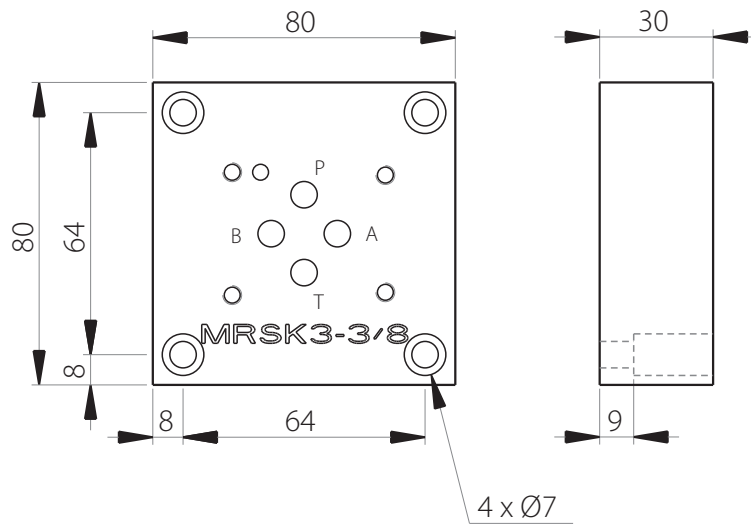
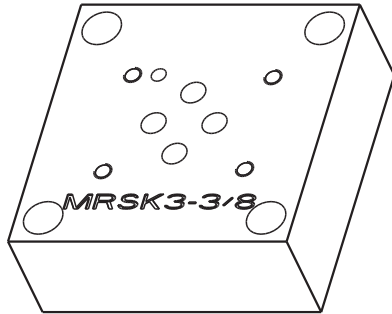
Designation code :





# MRSK3

Bottom ports subplate  
CETOP 3 / NG6



Technical specifications	
Material	Zinc-nickel electroplating
Pressure	350 bar max
Flow rate	60 L/min max
Weight	1.19 kg

Designation code :

MR . S . K - 3 - 3/8" G

MECABOR

Subplate

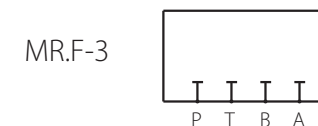
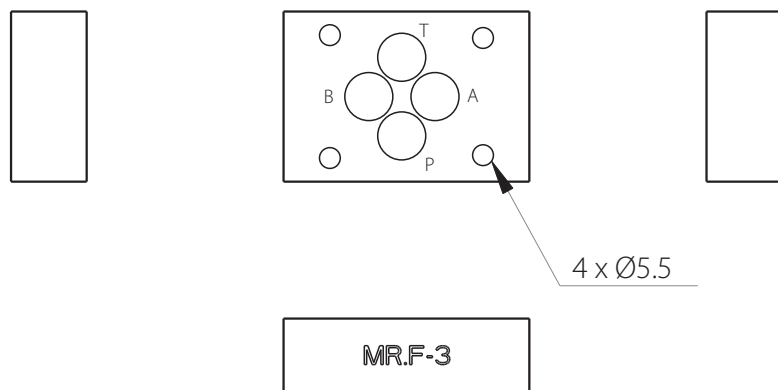
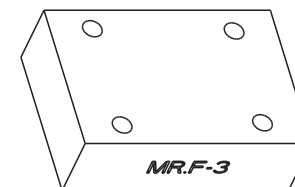
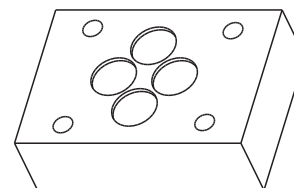
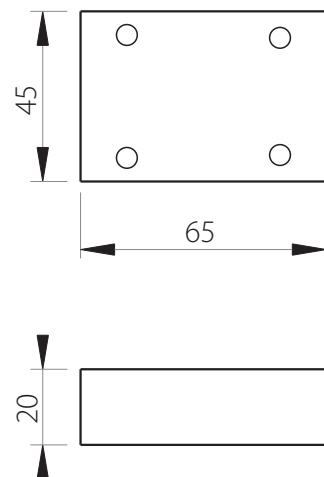
Bottom ports

G : ports BSP

CETOP 3

# MRF3

Blanking plate  
CETOP 3 / NG6



Designation code :

MR . F - 3

MECABOR

Blanking plate

CETOP 3

## Technical specifications

Material Zinc-nickel electroplating

Pressure 400 bar max

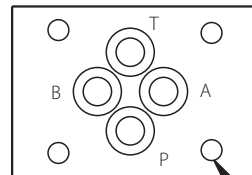
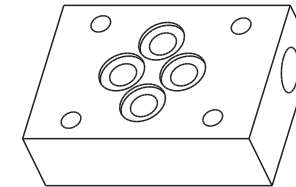
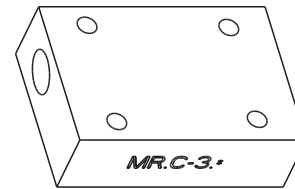
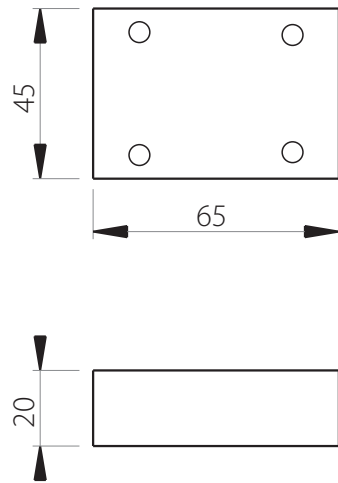
Weight 0.46 kg

Supplied with seals and screws

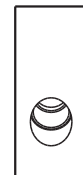


# MRC3

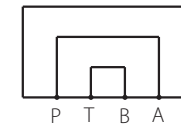
Crossover plate P-A or P-B  
CETOP 3 / NG6



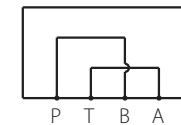
4 x Ø5.5



MRC-3.PA



MRC-3.PB



MRC-3\*

Designation code :

MR . C - 3 . \*

MECABOR

Crossover plate

CETOP 3

PA = P - A  
T - B

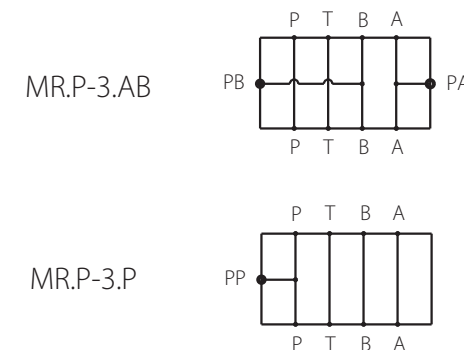
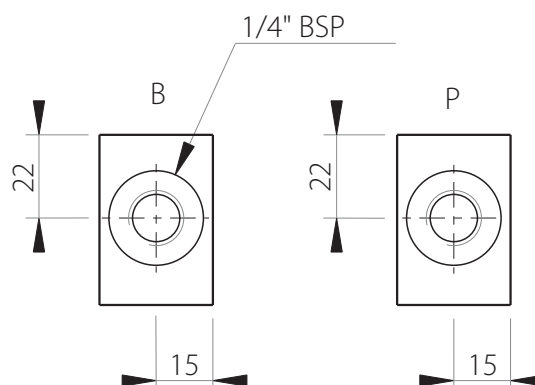
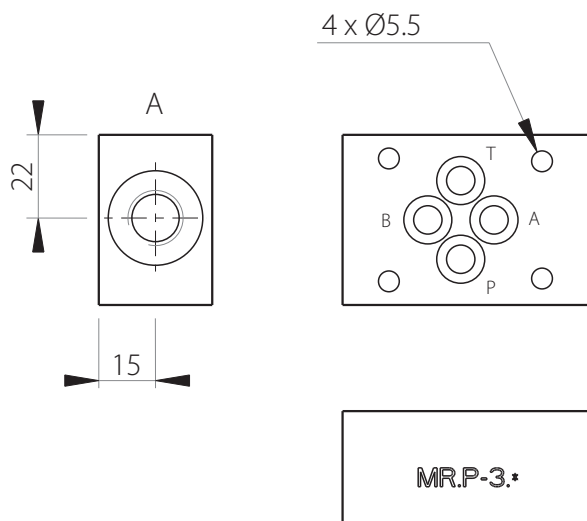
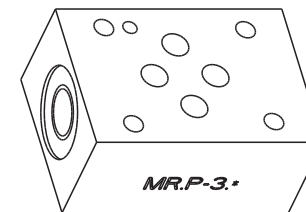
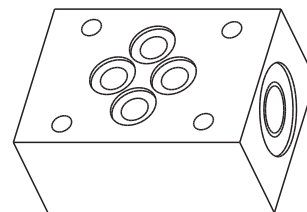
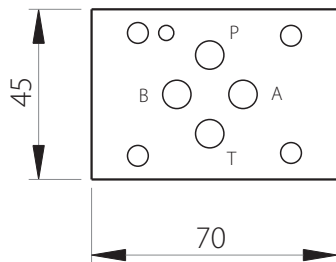
PB = P - B  
T - A

### Technical specifications

Material	Zinc-nickel electroplating
Pressure	400 bar max
Weight	0.40 kg
Supplied with seals	

# MRP3

Sandwich plate for pressure test points  
CETOP 3 / NG6



Designation code :

MR . P - 3 . \* - 1/4" G

MECABOR

Sandwich plate for  
pressure test points

CETOP 3

G : ports BSP

P = pressure test point on P

AB = pressure test points  
on A and B

Technical specifications	
Material	Zinc-nickel electroplating
Pressure	400 bar max
Weight	0.64 kg
Supplied with seals	



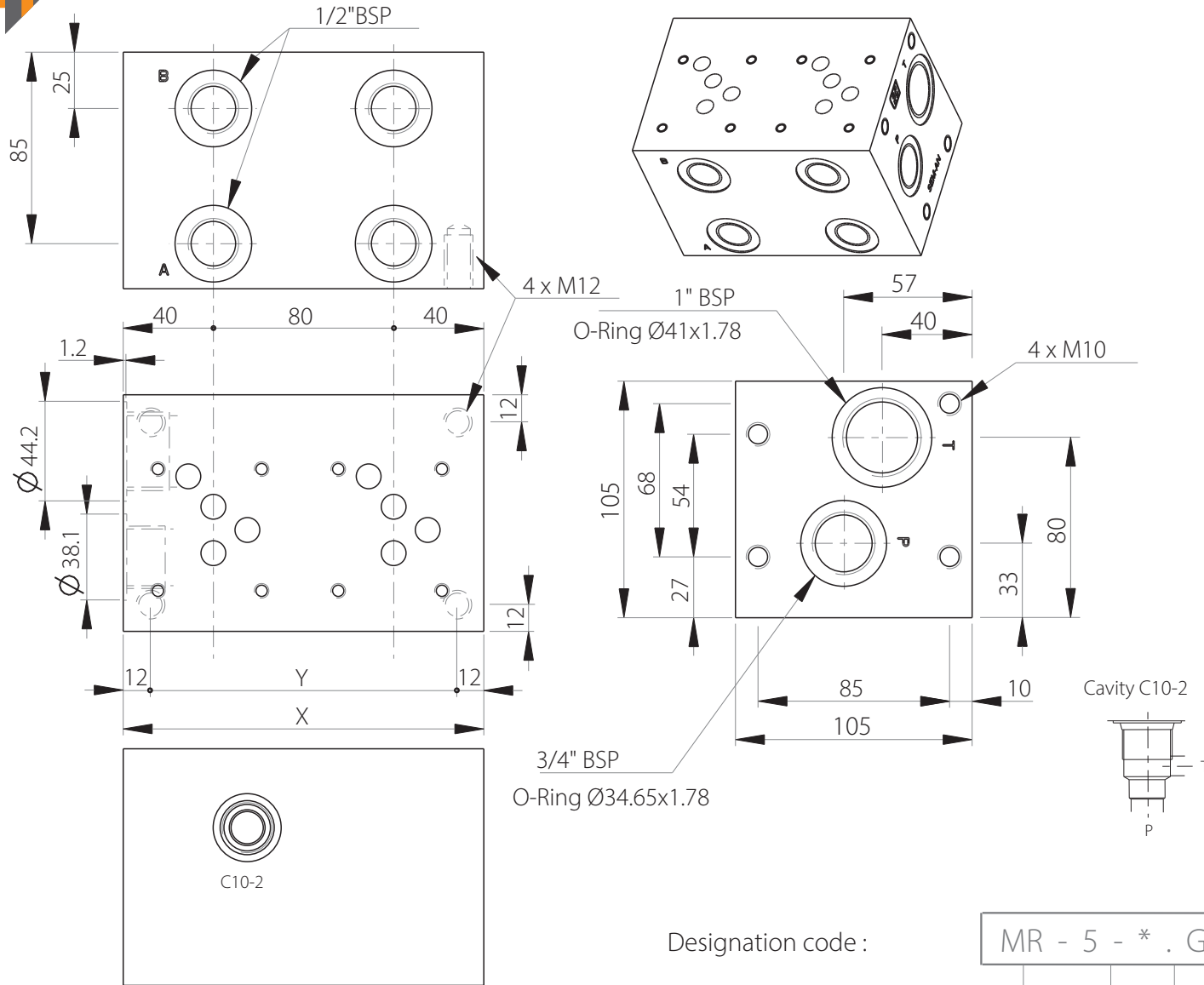




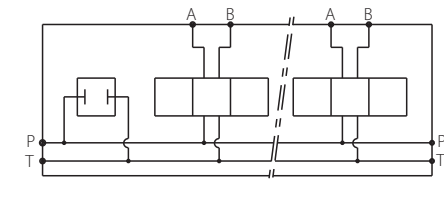


# MR5/C10-2

Side ports manifold + C10-2 cavity  
CETOP 5 / NG10



Stations	X	Y	(kg)
1	80	56	5.70
2	160	136	11.30
3	240	216	16.90
4	320	296	22.60
5	400	376	28.40
6	480	456	34.10
7	560	536	39.80
8	640	616	45.50



Technical specifications	
Material	Zinc-nickel electroplating
Pressure	300 bar max
Flow rate	120 L/min max

Designation code :

MR - 5 - \* . G / C10-2

MECABOR

CETOP 5  
side ports

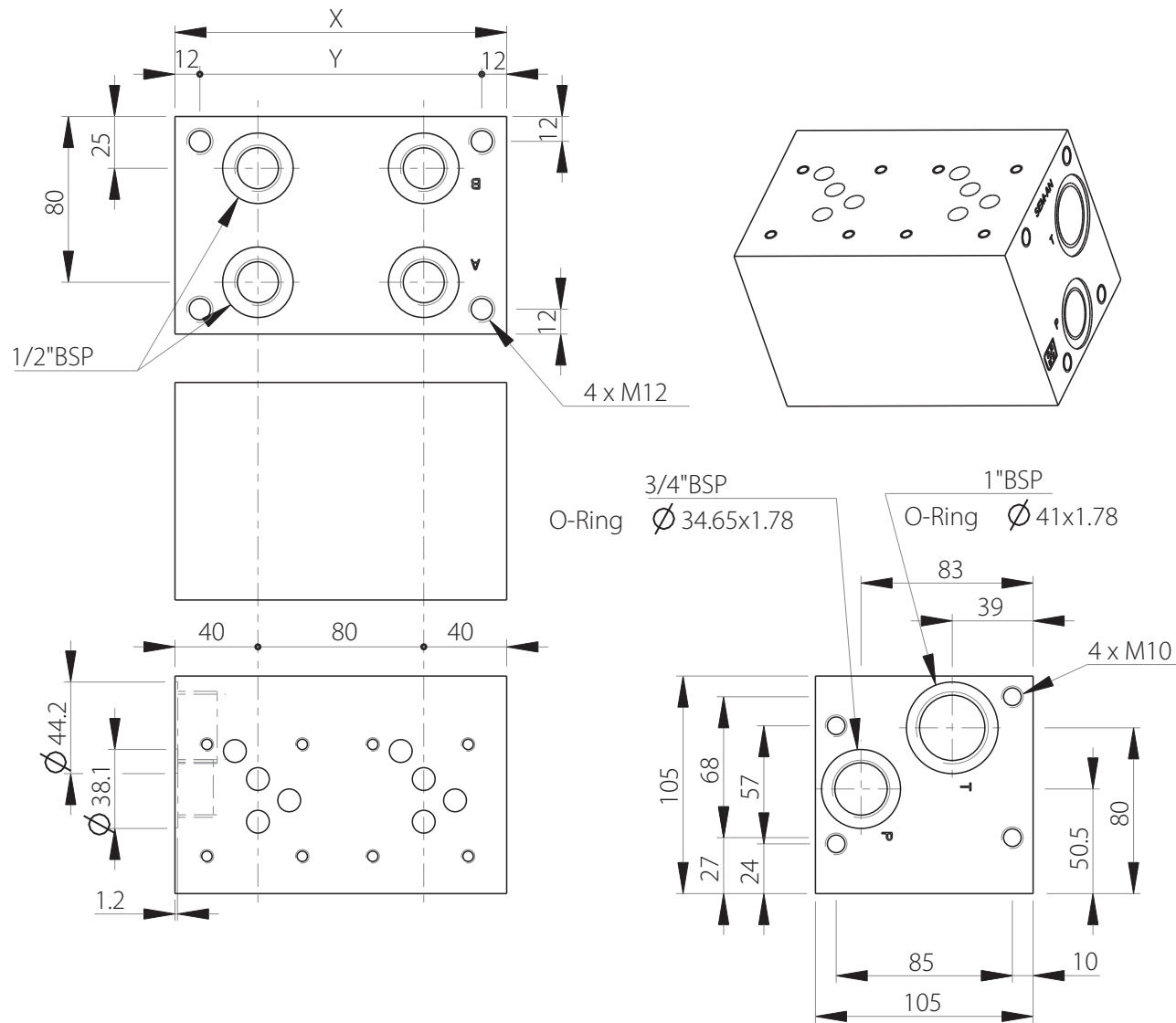
Station number

Cavity

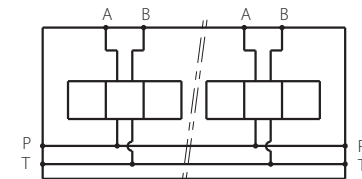
G : ports BSP

# MRK5

Bottom ports manifold  
CETOP 5 / NG10



Stations	X	Y	(kg)
1	80	56	5.80
2	160	136	11.30
3	240	216	17.00
4	320	296	22.70
5	400	376	28.50
6	480	456	34.20
7	560	536	39.90
8	640	616	45.60



Designation code :

MR . K - 5 - \* . G

MECABOR

Bottom ports

CETOP 5

G : ports BSP

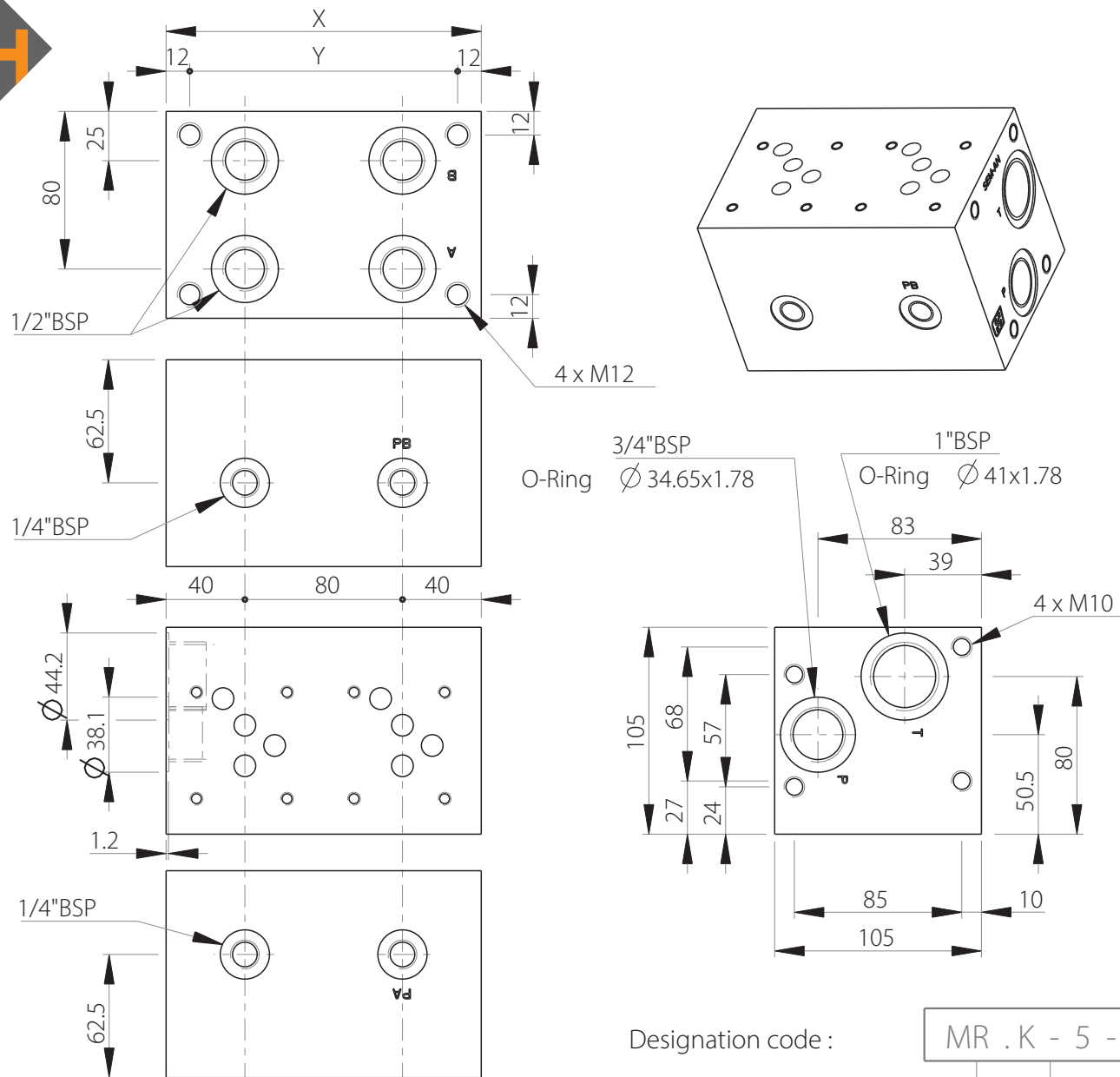
Station number

Technical specifications	
Material	Zinc-nickel electroplating
Pressure	300 bar max
Flow rate	120 L/min max

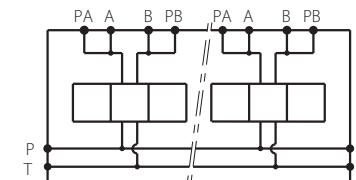


# MRK5-PAB

Bottom ports manifold  
+ pressure test points on A and B  
CETOP 5 / NG10

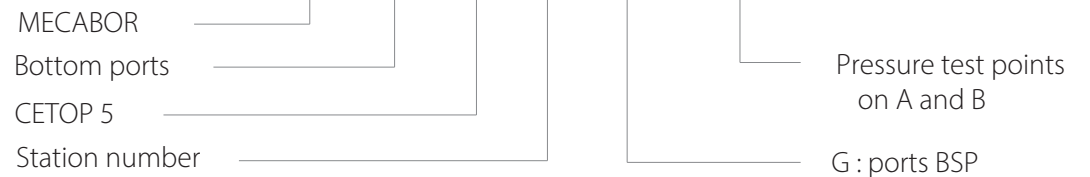


Stations	X	Y	(kg)
1	80	56	5.80
2	160	136	11.30
3	240	216	17.00
4	320	296	22.70
5	400	376	28.50



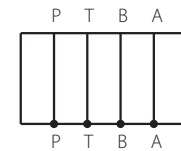
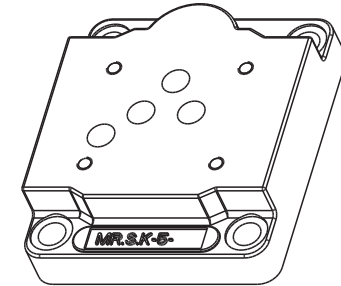
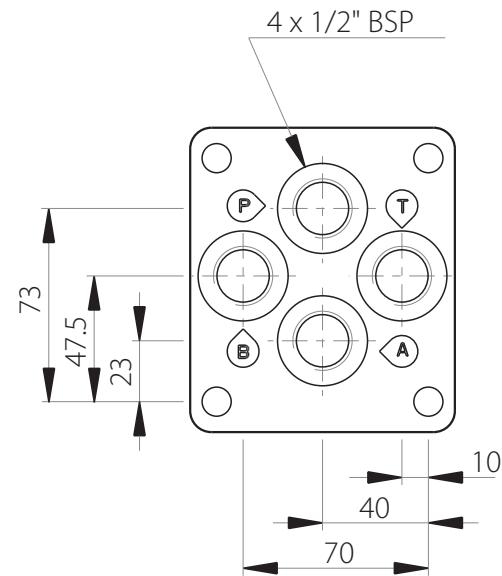
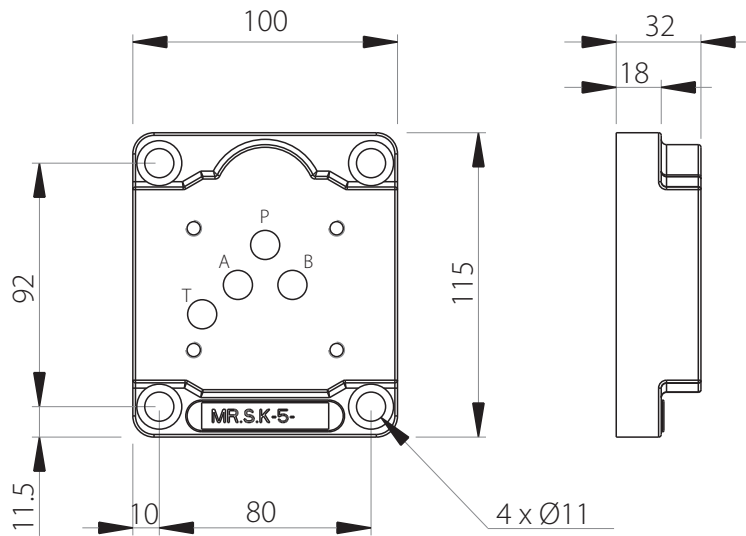
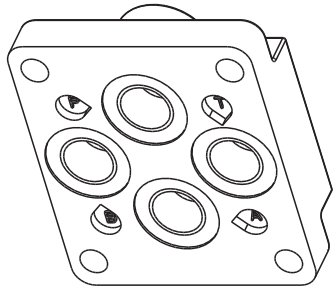
Technical specifications	
Material	Zinc-nickel electroplating
Pressure	300 bar max
Flow rate	120 L/min max

Designation code : MR . K - 5 - \* . G . P . AB



# MRSK5

Bottom ports subplate  
CETOP 5 / NG10



Technical specifications	
Material	Zinc-nickel electroplating
Pressure	350 bar max
Flow rate	100 L/min max
Weight	1.9 kg

Designation code :

MR . S . K - 5 - 1/2" G

MECABOR

Subplate

Bottom ports

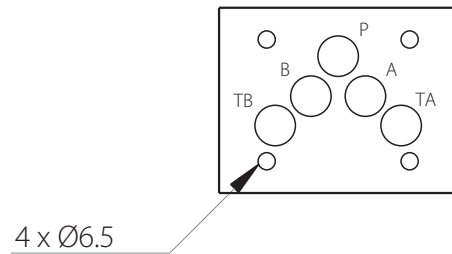
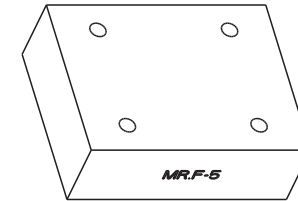
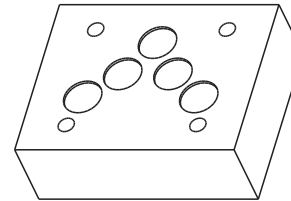
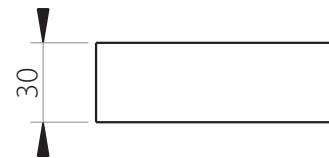
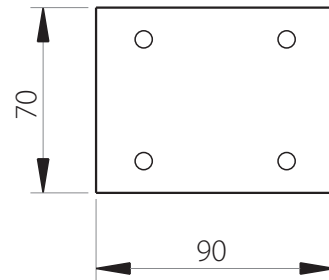
G : ports BSP

CETOP 5



# MRF5

Blanking plate  
CETOP 5 / NG10



Designation code :

MR . F - 5

MECABOR

Blanking plate

CETOP 5

## Technical specifications

Material Zinc-nickel electroplating

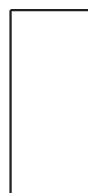
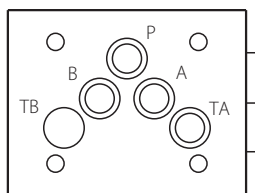
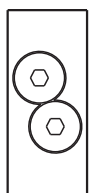
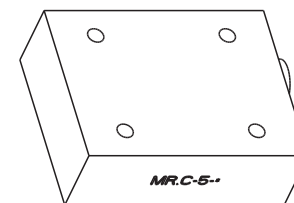
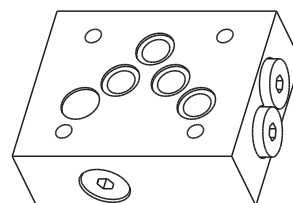
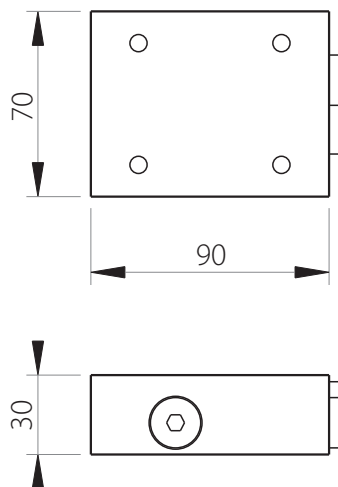
Pressure 400 bar max

Weight 1.50 kg

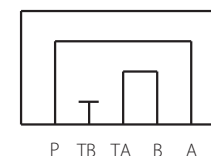
Supplied with seals and screws

# MRC5

Crossover plate P-A or P-B  
CETOP 5 / NG10

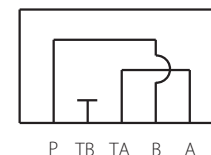


MR.C-5.PA



CAD Files  
MRC5PA

MR.C-5.PB



MRC5PB

Designation code :

MR . C - 5 . \*

MECABOR

Crossover plate

CETOP 5

PA = P - A  
T - B  
PB = P - B  
T - A

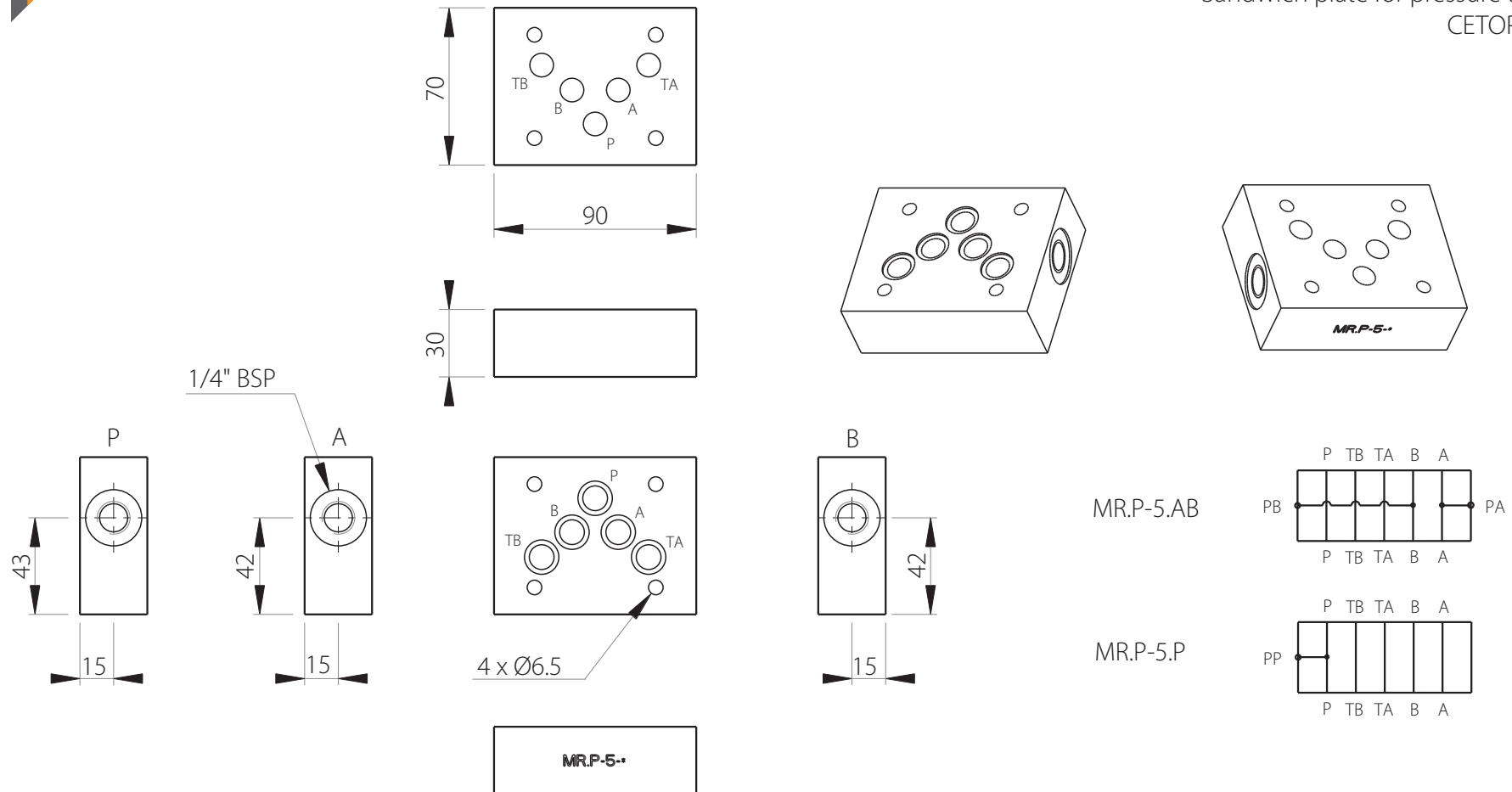
## Technical specifications

Material	Zinc-nickel electroplating
Pressure	400 bar max
Weight	1.35 kg
Supplied with seals	



# MRP5

Sandwich plate for pressure test points  
CETOP 5 / NG10



Designation code :

MR . P - 5 - \* - 1/4" G

MECABOR

Sandwich plate for  
pressure test points

CETOP 5

G : ports BSP

P = pressure test point on P  
AB = pressure test points  
on A and B

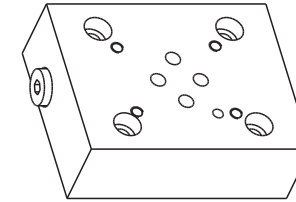
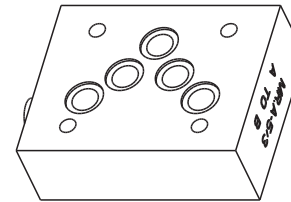
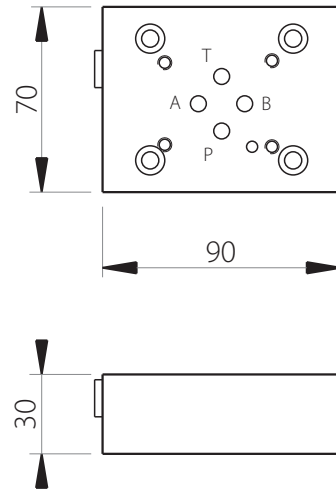
## Technical specifications

Material	Zinc-nickel electroplating
Pressure	400 bar max
Weight	1.30 kg
Supplied with seals	

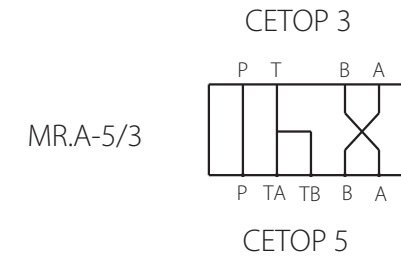
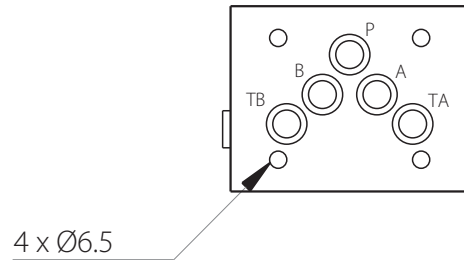


# MRA-5/3

Adaptor plate Cetop 3 to Cetop 5, AB and BA  
CETOP 5 / NG10



MRA-5/3  
A TO B



Technical specifications	
Material	Zinc-nickel electroplating
Pressure	400 bar max
Weight	1.40 kg
Supplied with seals and screws	

Designation code :

MR . A - 5 / 3

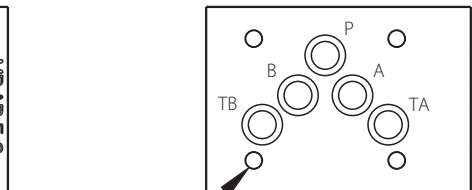
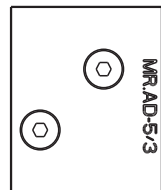
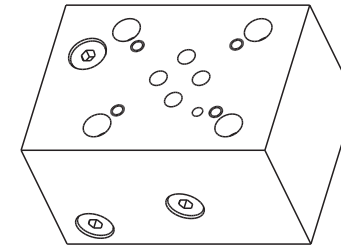
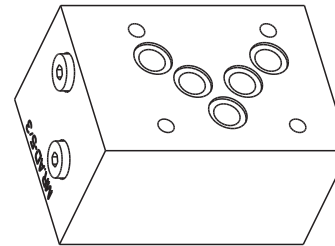
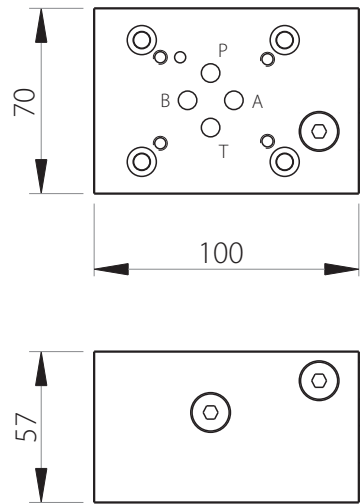
MECABOR  
Adaptor plate  
CETOP 5  
CETOP 3



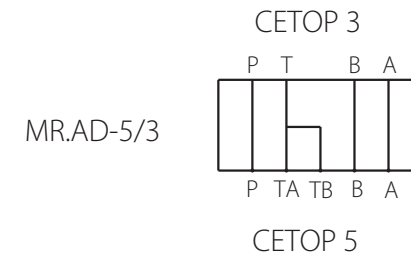
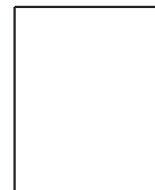


# MRAD-5/3

Direct adaptor plate Cetop3 to Cetop 5, A-A and B-B  
CETOP 5 / NG10



4 x Ø6.5



Designation code :

MR . AD - 5 / 3

MECABOR

Direct adaptor plate

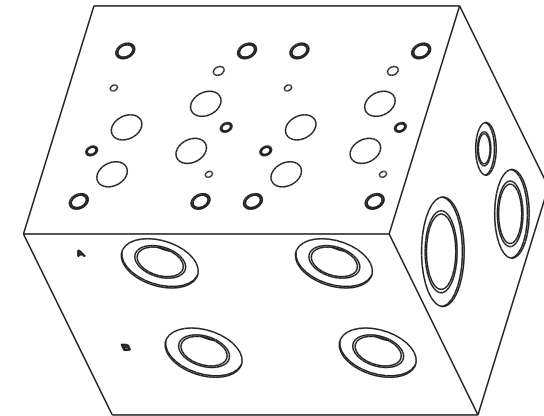
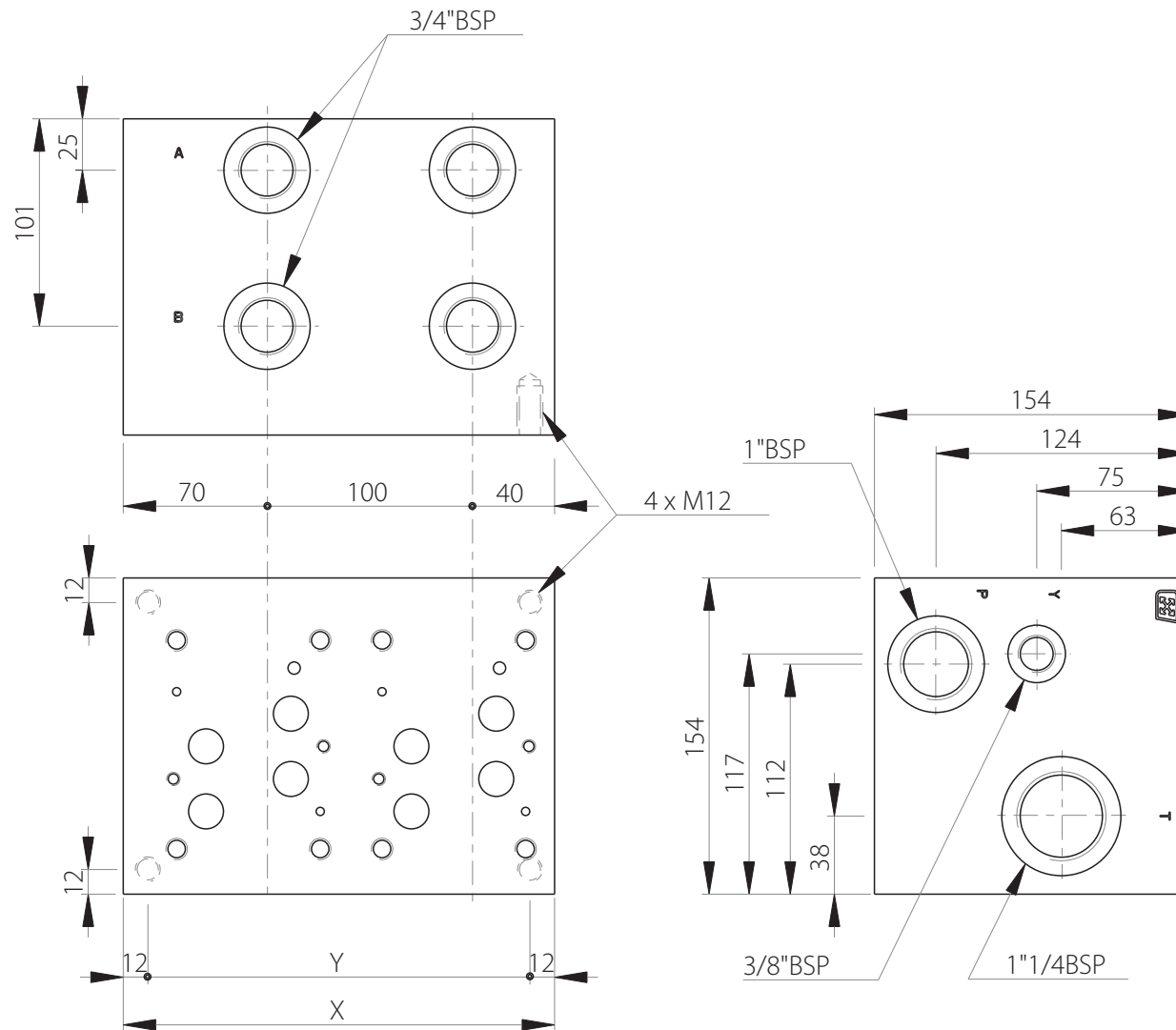
CETOP 5

CETOP 3

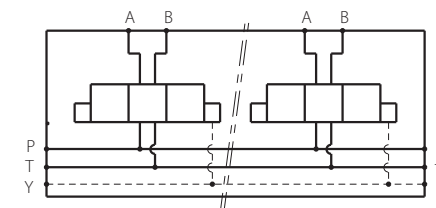
Technical specifications	
Material	Zinc-nickel electroplating
Pressure	400 bar max
Weight	2.90 kg
Supplied with seals and screws	

# MR7- 3/4"

Side ports manifold with 3/4" ports  
CETOP 7 / NG16



Stations	X	Y	(kg)
1	110	86	16
2	210	186	30



Technical specifications	
Material	Zinc-nickel electroplating
Pressure	300 bar max
Flow rate	220 L/min max

Designation code :

MR - 7 - \* - 3/4" G

MECABOR

CETOP 7  
side ports

Station number

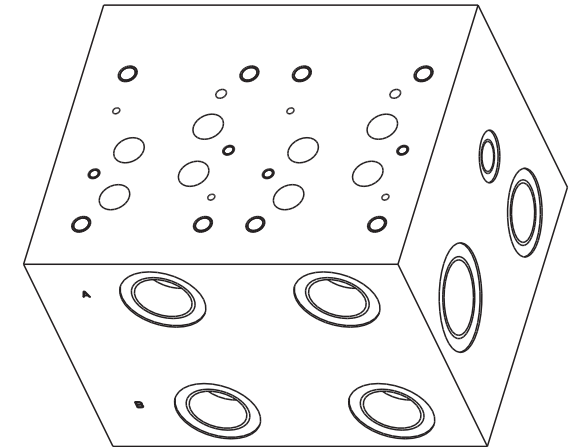
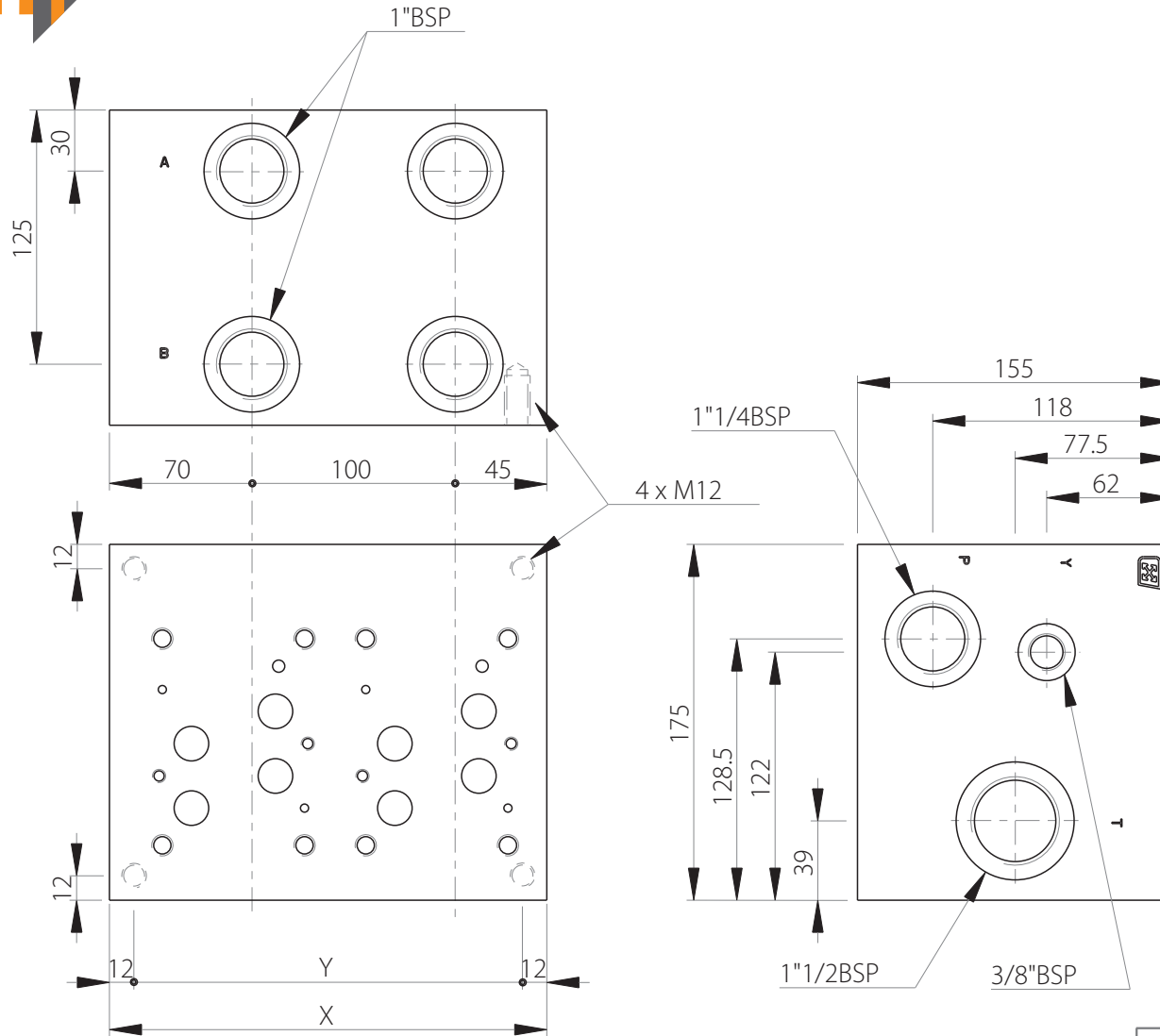
G : ports BSP

Ports

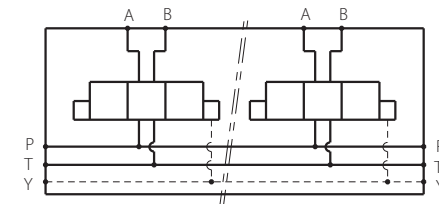


# MR7- 1"

Side ports manifold with 1" ports  
CETOP 7 / NG16



Stations	X	Y	(kg)
1	115	91	19
2	215	191	35
3	315	291	51



Designation code :

MR - 7 - \* - 1" G

MECABOR

CETOP 7  
side ports

Station number

G : ports BSP

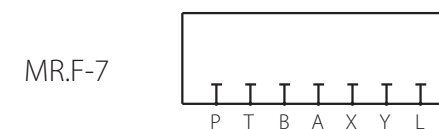
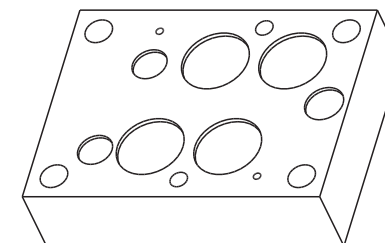
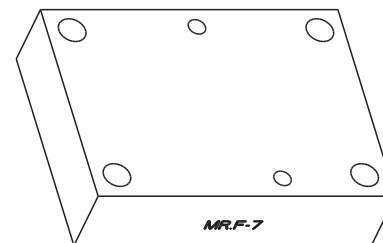
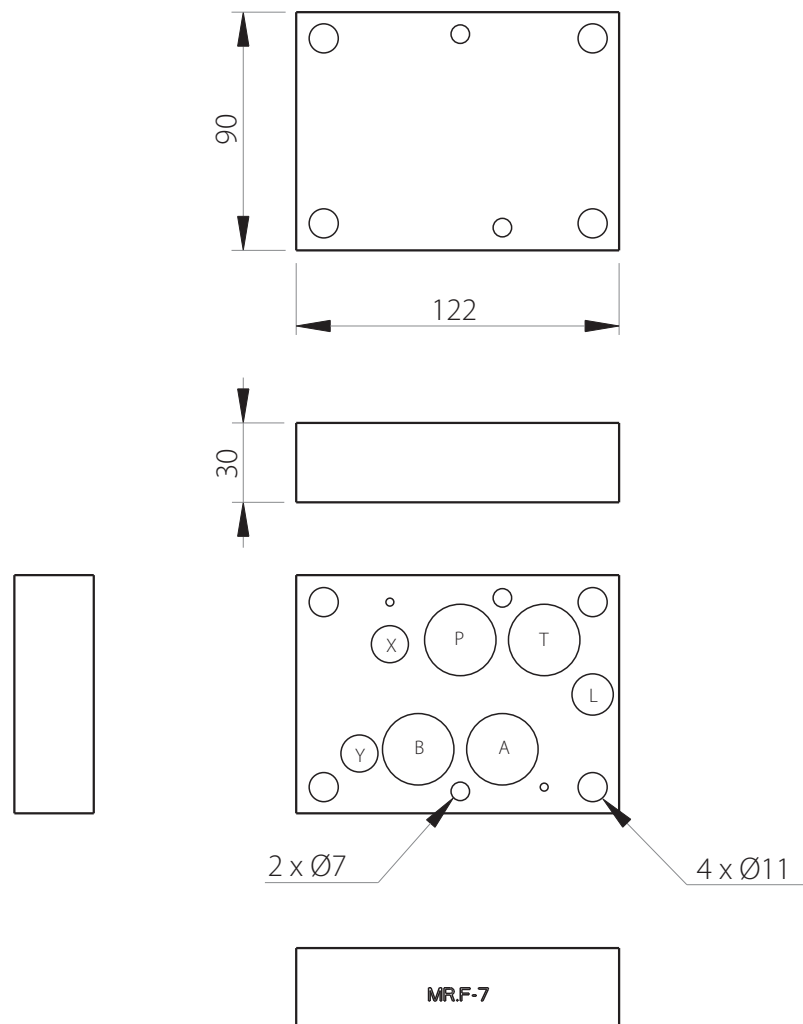
Ports

## Technical specifications

Material	Zinc-nickel electroplating
Pressure	300 bar max
Flow rate	270 L/min max

# MRF7

Blanking plate  
CETOP 7 / NG16



Designation code :

MR . F - 7

MECABOR

Blanking plate

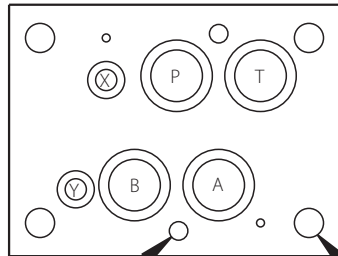
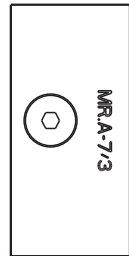
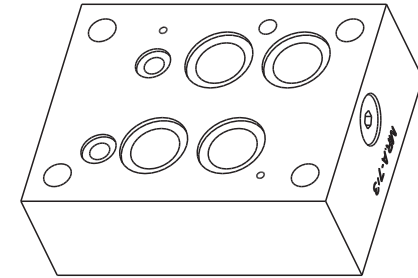
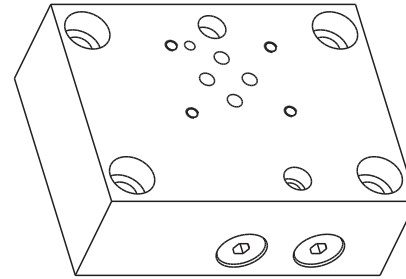
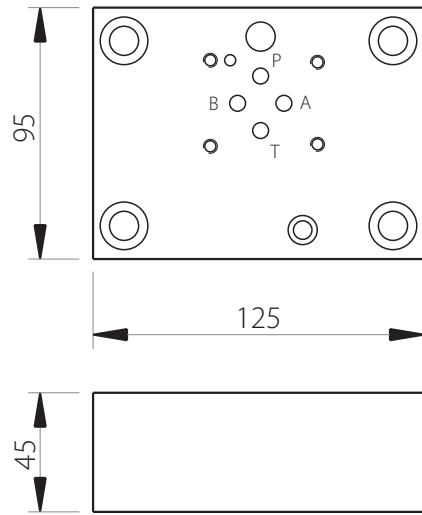
CETOP 7

Technical specifications	
Material	Zinc-nickel electroplating
Pressure	400 bar max
Weight	2.60 kg
Supplied with seals and screws	



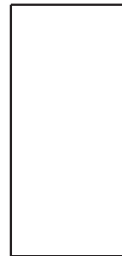
# MRA-7/3

Adaptor plate Cetop 3 to Cetop 7  
CETOP 7 / NG16



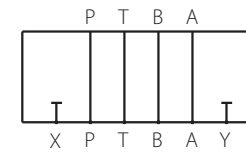
2 x Ø7

4 x Ø11



MRA-7/3

CETOP 3



CETOP 7

Designation code :

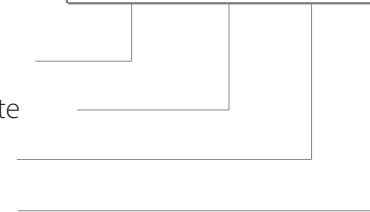
MR . A - 7 / 3

MECABOR

Adaptor plate

CETOP 7

CETOP 3



## Technical specifications

Material Zinc-nickel electroplating

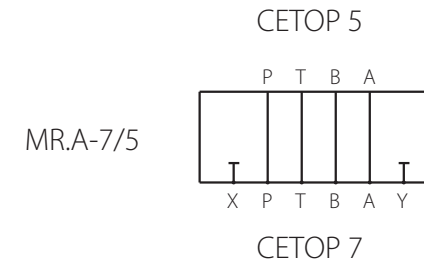
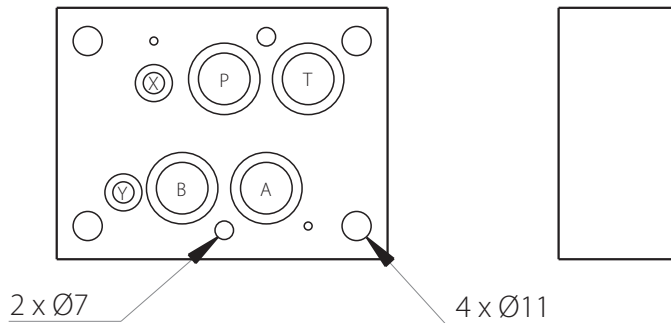
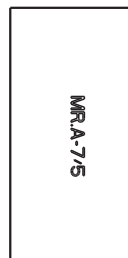
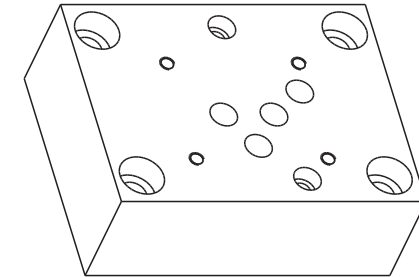
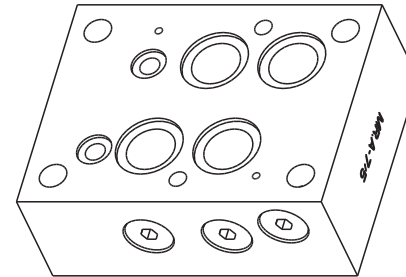
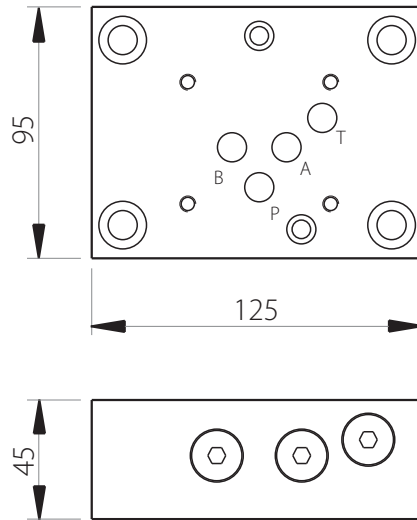
Pressure 400 bar max

Weight 3.80 kg

Supplied with seals and screws

# MRA-7/5

Adaptor plate Cetop 5 to Cetop 7  
CETOP 7 / NG16



Technical specifications	
Material	Zinc-nickel electroplating
Pressure	400 bar max
Weight	3.60 kg
Supplied with seals and screws	

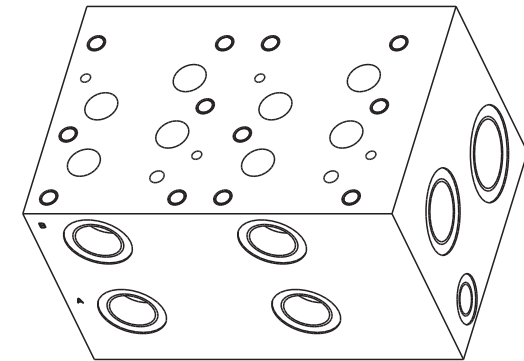
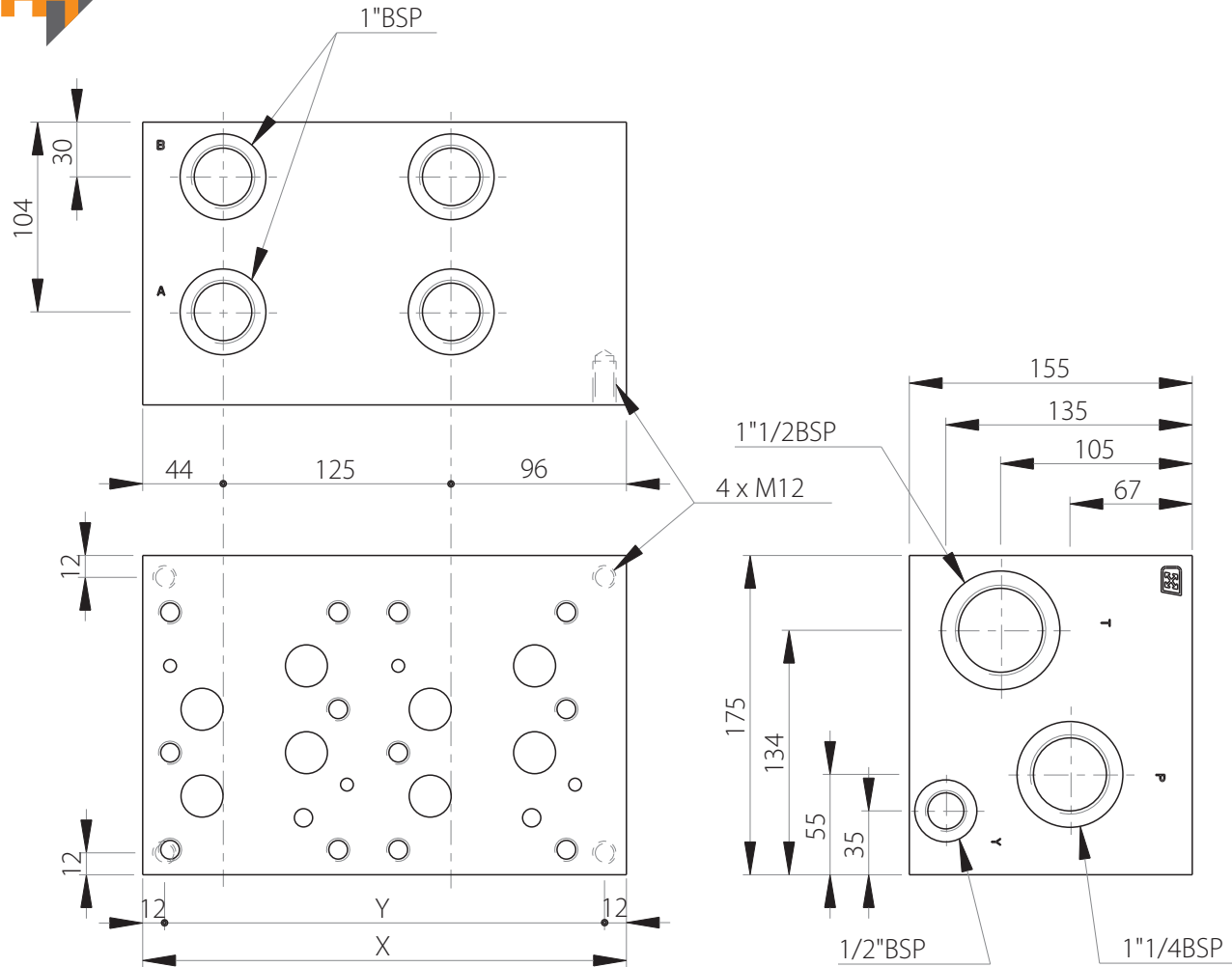
Designation code :



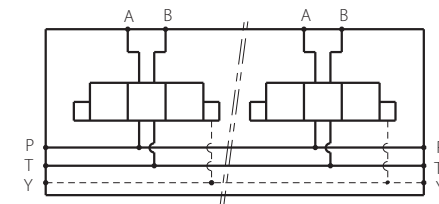


# MR8- 1"

Side ports manifold with 1" ports  
CETOP 8 / NG25



Stations	X	Y	(kg)
1	140	116	23
2	265	241	43



Technical specifications	
Material	Zinc-nickel electroplating
Pressure	300 bar max
Flow rate	350 L/min max

Designation code :

MR - 8 - \* - 1" G

MECABOR

CETOP 8  
side ports

Station number

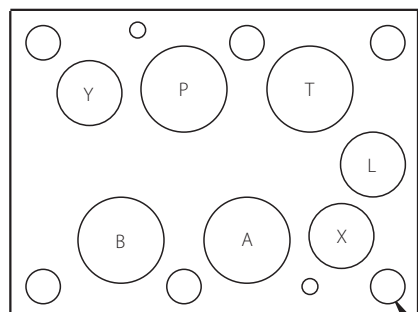
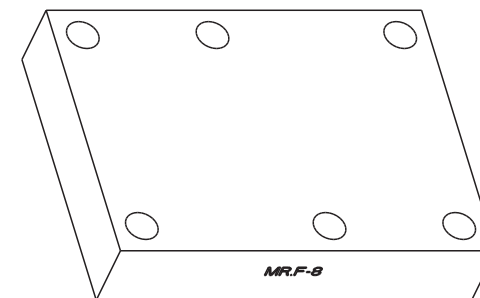
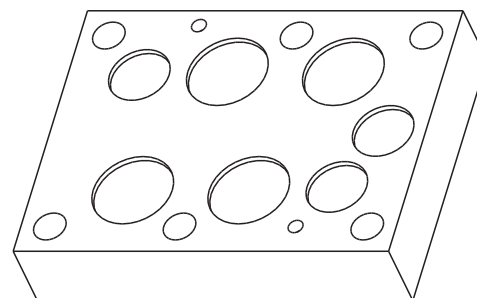
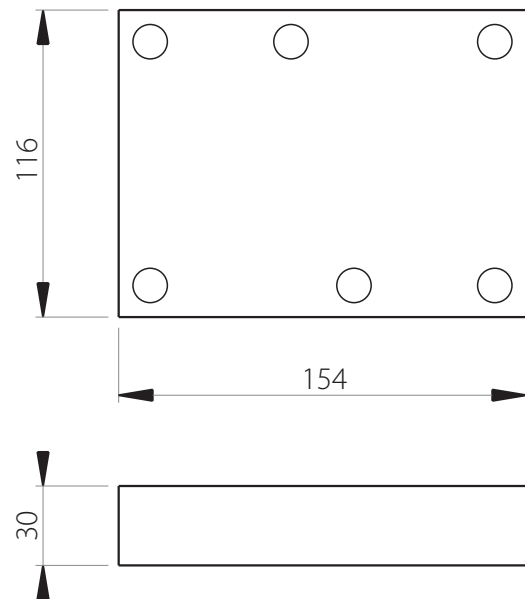
G : ports BSP

Ports



# MRF8

Blanking plate  
CETOP 8 / NG25



6 x Ø13



MRF-8



Designation code :

MR . F - 8

MECABOR

Blanking plate

CETOP 8

## Technical specifications

Material Zinc-nickel electroplating

Pressure 400 bar max

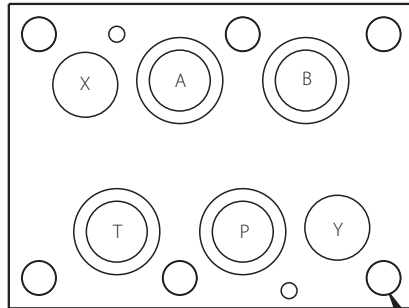
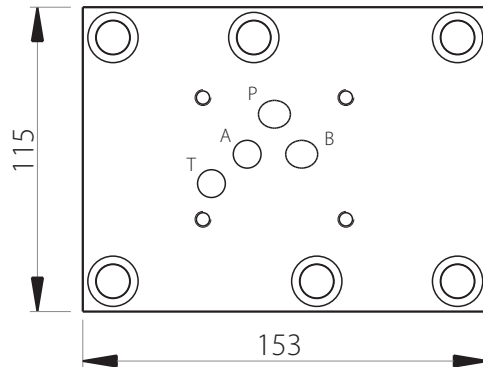
Weight 4.30 kg

Supplied with seals and screws

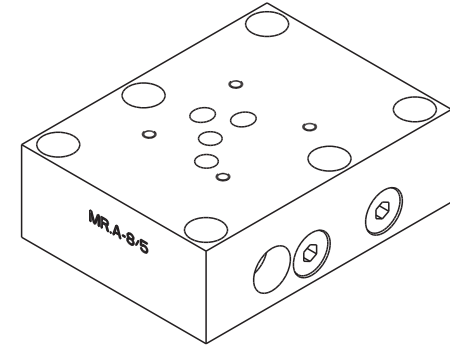
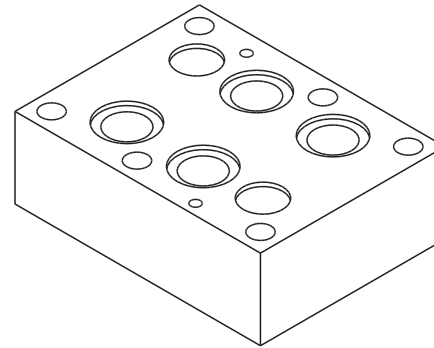
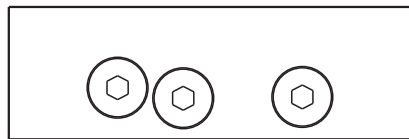


# MRA-8/5

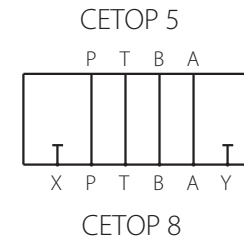
Adaptor plate Cetop 5 to Cetop 8  
CETOP8 / NG25



6 x Ø13



MRA-8/5



Designation code :

MR . A - 8 / 5

MECABOR

Adaptor plate

CETOP 8

CETOP 5

## Technical specifications

Material Zinc-nickel electroplating

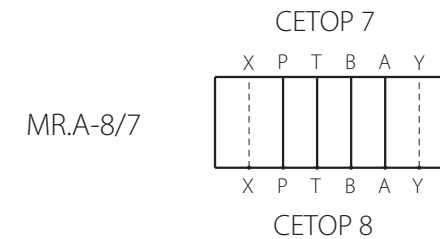
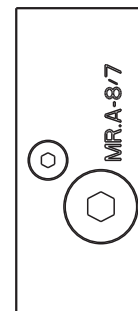
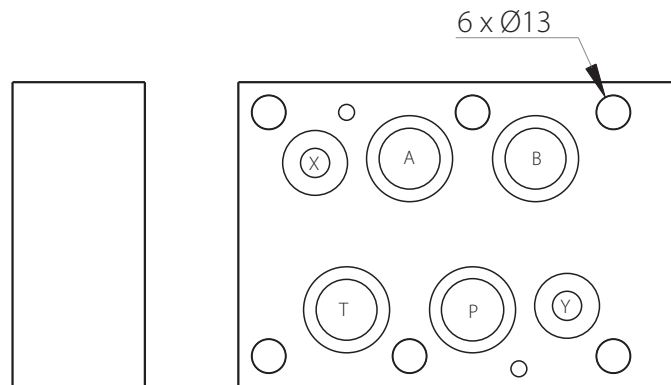
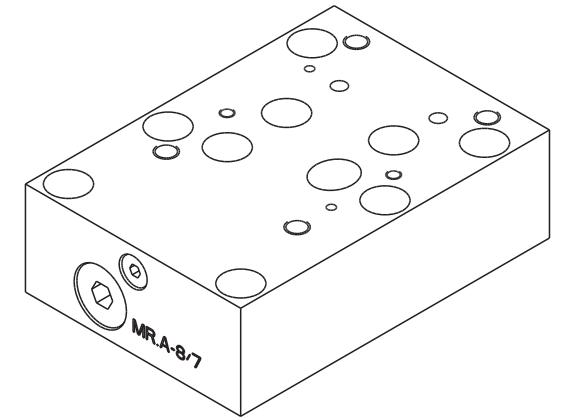
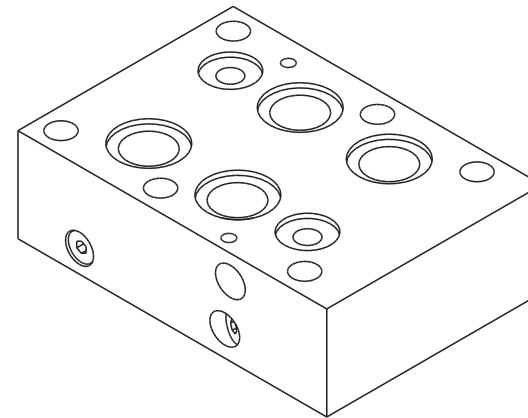
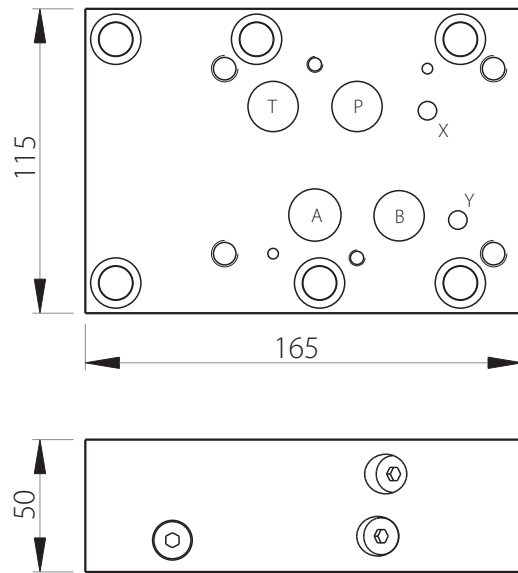
Pressure 400 bar max

Weight 5.70 kg

Supplied with seals and screws

# MRA-8/7

Adaptor plate Cetop 7 to Cetop 8  
CETOP 8 / NG25



MR.A-8/7

Technical specifications	
Material	Zinc-nickel electroplating
Pressure	400 bar max
Weight	6.30 kg
Supplied with seals and screws	

Designation code :





# ACTIONHYDRO™

HYDRAULIC PUMPS, MOTORS AND COMPONENTS

## Action-Hydro BV

Artemisweg 105 H

8239 DD Lelystad

The Netherlands

[info@action-hydro.nl](mailto:info@action-hydro.nl)

[www.action-hydro.nl](http://www.action-hydro.nl)

Tel. +31 (0)36 53 60 204

member of  
**ITH GROUP™**

  
**ABSCYLINDERS™**  
THE FACTORY WITH CYLINDER EXPERTS

  
**ACTIONHYDRO™**  
HYDRAULIC PUMPS, MOTORS AND COMPONENTS

  
**DUTCHHYDRAULICS™**  
WORLDWIDE TECHNICAL SOLUTIONS

  
**EUROTRADE™**  
TOOLS, CERTIFICATION AND SERVICES

  
**WDHCYLINDERS™**  
THE DESIGN AND MANUFACTURING COMPANY